

Harley Medical Group reveals increase in Body Balancing Surgical procedures

THE HARLEY MEDICAL GROUP®

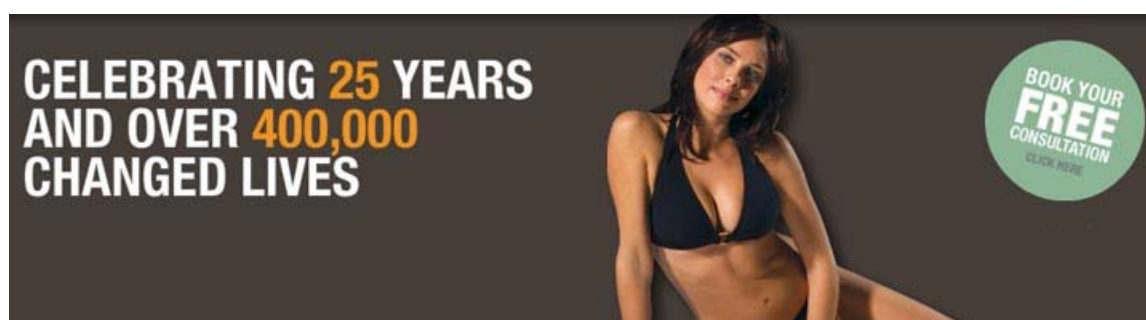
0800 085 4984
Ireland 1800 24 24 42

Released on: February 3, 2009, 12:19 am

Press Release Author: [Harley Medical Group](#)

Industry: [Healthcare](#)

Press Release Summary: The Harley Medical Group has noted an increase in the number of women booking in for Body Balancing surgery



Press Release Body: The Harley Medical Group, the UK's leading cosmetic surgery group, has revealed an increase in the number of women undergoing Body Balancing surgical procedures, with patients investing in body tailoring to balance out proportions of pear shaped figures, remove "muffin tops" (the name given to the layer of stomach fat that hangs over a waistline) and to correct asymmetrical boobs.

"Symmetry has an evolutionary basis for determining beauty and has long been an important part of looking good to attract a mate," commented Lisa Littlehales, the Harley Medical Group Clinic Manager, "[Cosmetic surgery](#) is used to sculpt the body and, whether they are a size 0 or a size 16, women are requesting [plastic surgery](#) to help make their body symmetrical and to balance out the ratio of waist-to-hips-to-chest."

The Harley Medical Group also revealed the specific procedures women are undertaking to balance their bodies, with breast balancing being one of the most popular. Half of women who come to The Harley Medical Group have a breast imbalance of up to a cup size. The most common sized [breast](#)

[implant](#) at The Harley Medical Group is the equivalent of a C cup but corrections can be made in breast size up to an accuracy of the size of a teaspoon. As well as perfecting an imbalance, [breast augmentation](#) is increasingly used to reshape "rectangular" women, defined as someone whose waist is less than nine inches smaller than the hips or bust.

Another popular procedure according to The Harley Medical Group is the "Muffin Top Op", which gets rid of the layer of stomach fat that hangs over the waistline. A "Muffin Top Op" is carried out as a day case and can only be performed on those that are within a healthy BMI of 28. The results are immediate and once a fat cell has been removed it rarely grows back so, as well as banishing those love handles, a tight tummy is also easily achievable.

The Harley Medical Group also revealed a large number of women are undergoing "Pear Reshaping", with an estimated 70% of British women being pear shaped.

Lisa Littlehailes said: "As this body shape ages, it is prone to developing a "square" bottom shape, so at The Harley Medical Group, we do a reshaping operation to help balance the proportions of the top half with the lower half of the body and simultaneously make the hips less angular."

The pear reshaping operation is again a day case and the recovery period is around six weeks.

About The Harley Medical Group:
The Harley Medical Group is the UK's largest cosmetic surgery provider, performing more procedures and with more clinics than any other cosmetic surgery provider. It has been established for over 25 years and is one of the most highly-regarded Cosmetic Surgery Groups operating in the UK. It has conducted over 400,000 procedures to date.

In 2004, The Harley Medical Group's Chairman Mel Braham, at the request of the Department of Health became a member of the department's Steering Committee, set up to oversee the introduction of new regulations covering the entire Cosmetic Surgery sector. All of The Harley Medical Group's clinics are registered with the Healthcare Commission.

Web Site: <http://www.harleymedical.co.uk/>

Contact Details: Media enquiries:

Hannah Walsh

Rain Communications UK

2 Greycoat Place

Westminster

London

SW1P 1SB

020 7222 4345